

DIN-rail adapter Instruction Manual

Types : 045127

The Din-rail adapter is the attachment of breakers for mounting on the din-rail.
Please read these Instructions carefully to ensure correct use of the Device. The Manufacturer assumes no responsibility for damages resulting from non-application or incorrect application of the instructions provided herein.
This manual is to be delivered to the user after completion of the installation work.
*The contents of this manual may be subject to change without notice.

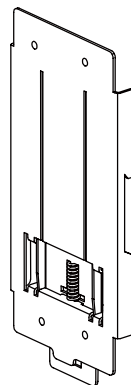
2G0927SAA (KRB-5350)

1 Applicable Breaker Type

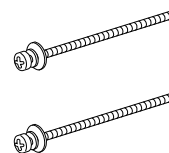
| Applicable breaker type | | | DIN rail adapter type |
|-------------------------|-------|-------|-----------------------|
| Connections *1 | Poles | Frame | |
| FC | 3 | 125AF | 045127 |
| FC | 3 | 250AF | |

*1:FC= Front connected

2 Packaged Items

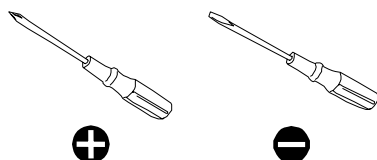


Din-rail adapter



Pan Head Screws
M4 × 50 2pcs.

3 Assembly Tools



4 Safety Notices

Be sure to read these Instructions and other associated documents accompanying the product thoroughly to be familiarize yourself with the product handling, safety information, and all other precautions before mounting, using, servicing, or inspecting the product.
In these Instructions, safety notices are divided into "Warning" and "Caution" according to the hazard level:

Warning : A warning notice with this symbol indicates that neglecting the suggested procedure or practice could be fatal or result in serious personal injury.

Caution : A caution notice with this symbol indicates that neglecting the suggested procedure or practice could result in moderate or slight personal injury and/or property damage.

Note that failing to observe caution notices could result in serious injury/damage in some situations. Because safety notices contain important information, be sure to read and observe them.

Warning

Operation Precautions

- Never touch live terminals. Doing so may result in electric shock.

Caution

Installation Precautions

- Installation work must be performed by competent persons.
- Prior to commencing any work on the product, open an upstream circuit breaker or the like to isolate all sources of power/voltage. Doing so may result in electric shock.

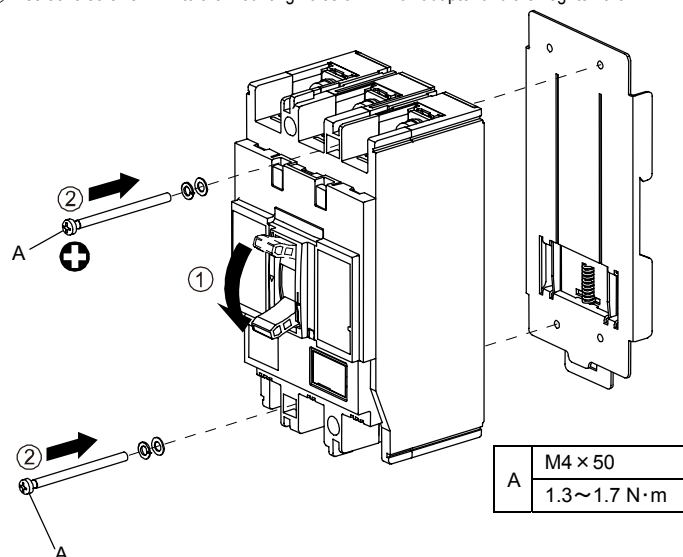
Operation Precautions

- Do not apply excessive force to the Din-rail adapter. Otherwise, damage may occur.

5 Mounting 1

- For detailed mounting dimensions, refer to the catalogue.

- Turn off the breakers.
- Insert two screws "A" into the mounting holes of DIN rail adapter and then tighten them.

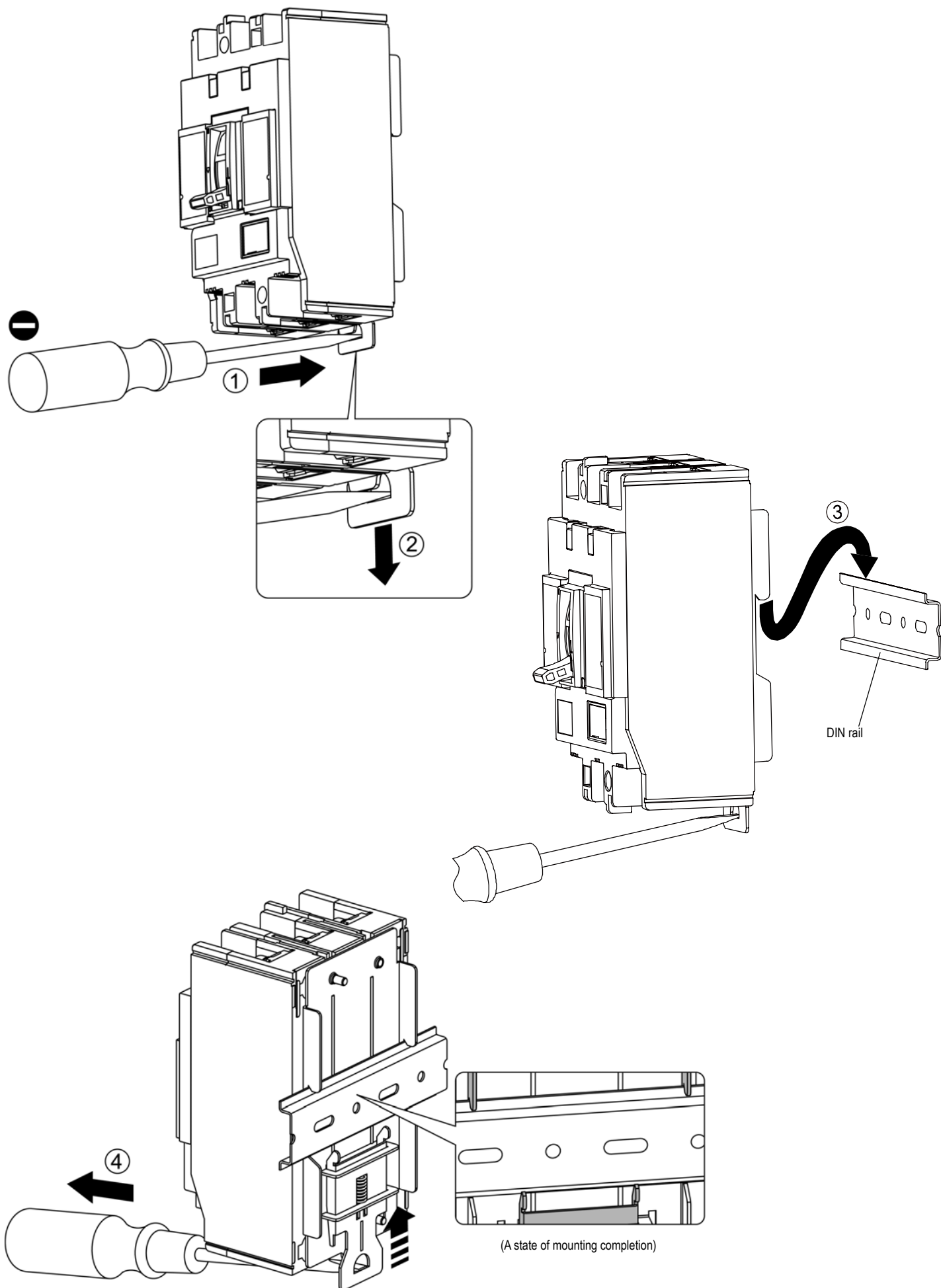


* Screw position for mounting

| 125AF | 250AF |
|-------|-------|
| | |

* Prior to removing, open an upstream circuit breaker or the like to isolate all sources of power/voltage. Doing so may result in electric shock.
When removing, remove the items in reverse order of mounting.

6 Mounting 2



* When removing, remove the items in reverse order of mounting.